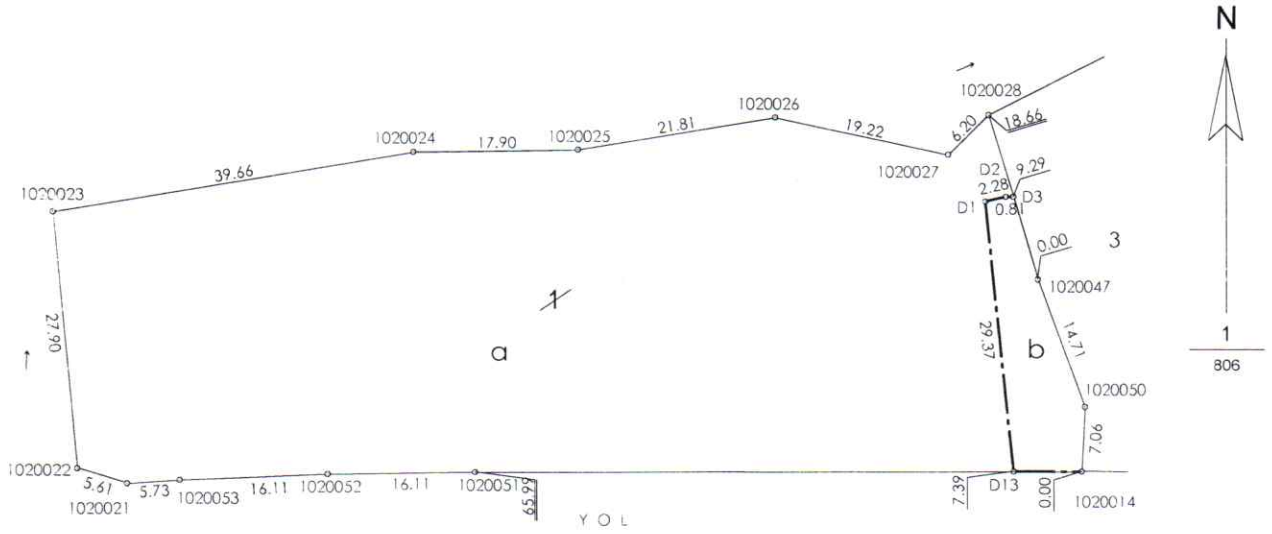


İLİ	BARTIN
İLÇESİ	MERKEZ
KÖY-MAH	KOZCAĞIZ - MERKEZ
ADA/PARSEL	102/1

## Kadastro Ayırma Çapı

	HA	m <sup>2</sup>	Dm <sup>2</sup>
YÜZÖLÇÜMÜ (TAPU)	-	3698	81
UYGULMAYA GİRMEYEN (a)		3516	59
UYGULAMAYA GİREN (b)		0182	22



NoktaNo	Y	X
1020014	444149.54	4595196.87
1020021	444045.63	4595195.76
1020022	444040.25	4595197.38
1020023	444037.76	4595225.17
1020024	444076.89	4595231.63
1020025	444094.78	4595231.87
1020026	444116.32	4595235.36
1020027	444135.10	4595231.27
1020028	444139.52	4595235.62
1020047	444144.81	4595217.73
1020050	444149.91	4595203.93
1020051	444083.55	4595196.94
1020052	444067.44	4595196.74
1020053	444051.34	4595196.13
D1	444139.14	4595226.10
D2	444141.37	4595226.61
D3	444142.18	4595226.63
D13	444142.15	4595196.88

## ALAN HESABI

NoktaNo	Y	X	NoktaNo	Y	X
1020014	444149.54	4595196.87	1020021	444045.63	4595195.76
1020022	444040.25	4595197.38	1020023	444037.76	4595225.17
1020024	444076.89	4595231.63	1020025	444094.78	4595231.87
1020026	444116.32	4595235.36	1020027	444135.10	4595231.27
1020028	444139.52	4595235.62	1020047	444144.81	4595217.73
1020050	444149.91	4595203.93	1020051	444083.55	4595196.94
1020052	444067.44	4595196.74	1020053	444051.34	4595196.13
D1	444139.14	4595226.10	D2	444141.37	4595226.61
D3	444142.18	4595226.63	D13	444142.15	4595196.88

Ada/Parsel	Noktalar	Hesap Alan	Düzeltilme	Deng Alan
1	1020024, 1020025, 1020026, 1020027, 1020028, D3, 1020047, 1020050, 1020014, D13, 1020051, 1020052, 1020053, 1020021, 1020022, 1020023	3698.81	+0.00	3698.81
a	D13, 1020051, 1020052, 1020053, 1020021, 1020022, 1020023, 1020024, 1020025, 1020026, 1020027, 1020028, D3, D2, D1	3515.59	+0.00	3515.59
b (D GİREN)	D13, D1, D2, D3, 1020047, 1020050, 1020014	182.22	+0.00	182.22
	TOPLAM	3698.81	+0.00	3698.81
TAPU ALANI HESAPLANAN FARK		3698.81		
TECVİZ		0.00		
		29.44		

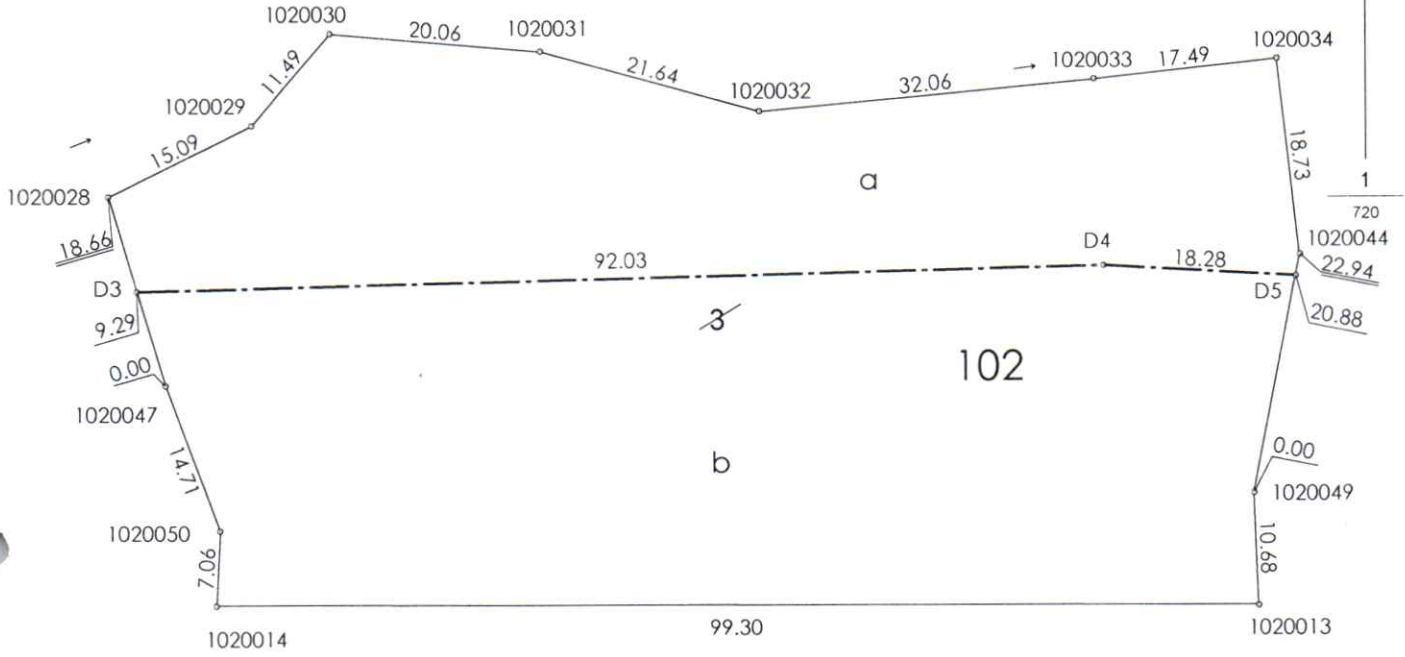
DÜZENLEYEN	UYGUNDUR BELEDİYE/ÖZEL İDARE		KADASTRO MÜDÜRLÜĞÜ
	KONTROL EDEN	ONAYLAYAN	KONTROL EDEN
Adı Soyadı ERCAN USTAĞLU Tarih 2024/08/01 İmza			

## Kadastro Ayırma Çapı

İLİ	BARTIN
İLÇESİ	MERKEZ
KÖY-MAH	KOZCAĞIZ - MERKEZ
ADA/PARSEL	102/3

	HA	m <sup>2</sup>	Dm <sup>2</sup>
YÜZÖLÇÜMÜ (TAPU)	-	5241	81
UYGULMAYA GİRMEYEN (A)		2034	43
UYGULAMAYA GİREN (B)		3207	38

Ada/Parsel	Noktalar	Hesap Alan	Düzeltilme	Deng. Alan
3	1020013,1020014,1020050,1020047,D3,1020028,1020029,1020030,1020031,1020032,1020033,1020034,1020044,D5,1020049	5241.81	+0.00	5241.81
a	1020034,1020044,D5,D4,D3,1020028,1020029,1020030,1020031,1020032,1020033	2034.43	+0.00	2034.43
b(D.GİREN)	D5,1020049,1020013,1020014,1020050,1020047,D3,D4	3207.38	+0.00	3207.38
TOPLAM		5241.81	+0.00	5241.81
TAPU ALANI	5241.81			
HESAPLANAN	5241.81			
FARK	0.00			
TECVİZ	30.53			



NoktaNo	Y	X
1020013	444248.84	4595196.78
1020014	444149.54	4595196.87
1020028	444139.52	4595235.62
1020029	444153.01	4595242.38
1020030	444160.52	4595251.07
1020031	444180.51	4595249.37
1020032	444201.38	4595243.66
1020033	444233.30	4595246.63
1020034	444250.69	4595248.57
1020044	444252.83	4595229.96
1020047	444144.81	4595217.73
1020049	444248.41	4595207.45
1020050	444149.91	4595203.93
D3	444142.18	4595226.63
D4	444234.18	4595228.95
D5	444252.43	4595227.93

DÜZENLEYEN

UYGUNDUR  
BELEDİYE/ÖZEL İDAREKADASTRO  
MÜDÜRLÜĞÜ

KONTROL EDEN

ONAYLAYAN

KONTROL EDEN

Adı Soyadı

Tarih

İmza

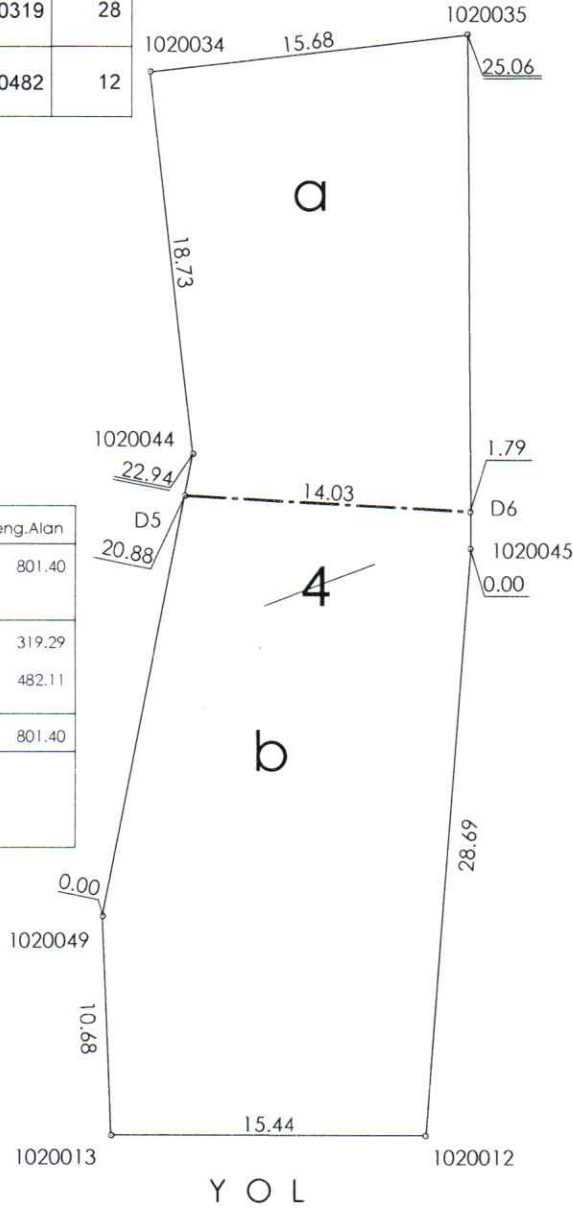
İLİ	BARTIN
İLÇESİ	MERKEZ
KÖY-MAH	KOZCAĞIZ - MERKEZ
ADA/PARSEL	102/4

## Kadastro Ayırma Çapı

	HA	m <sup>2</sup>	Dm <sup>2</sup>
YÜZÖLÇÜMÜ (TAPU)	-	0801	40
UYGULMAYA GİRMEYEN (A)		0319	28
UYGULAMAYA GİREN (B)		0482	12

NoktaNo	Y	X
1020012	444264.27	4595196.76
1020013	444248.84	4595196.78
1020034	444250.69	4595248.57
1020035	444266.26	4595250.42
1020044	444252.83	4595229.96
1020045	444266.45	4595225.37
1020049	444248.41	4595207.45
D5	444252.43	4595227.93
D6	444266.44	4595227.15

Ada/Parsel	Noktalar	Hesap Alan	Düzeltilme	Deng. Alan
4	1020044,1020034,1020035, D6,1020045,1020012, 1020013,1020049,D5	801.40	+0.00	801.40
a	1020035,D6,D5,1020044, 1020034	319.29	+0.00	319.29
b(D.GİREN)	1020049,D5,D6,1020045, 1020012,1020013	482.11	-0.00	482.11
	TOPLAM	801.40	-0.00	801.40
TAPU ALANI		801.40		
HESAPLANAN		801.40		
FARK		-0.00		
TECVİZ		11.56		



DÜZENLEYEN	UYGUNDUR BELEDİYE/ÖZEL İDARE		KADASTRO MÜDÜRLÜĞÜ
	KONTROL EDEN	ONAYLAYAN	KONTROL EDEN
Adı Soyadı			
Tarih			
İmza			



İLİ	BARTIN
İLÇESİ	MERKEZ
KÖY-MAH	KOZCAĞIZ - MERKEZ
ADA/PARSEL	102/5

## Kadastro Ayırma Çapı

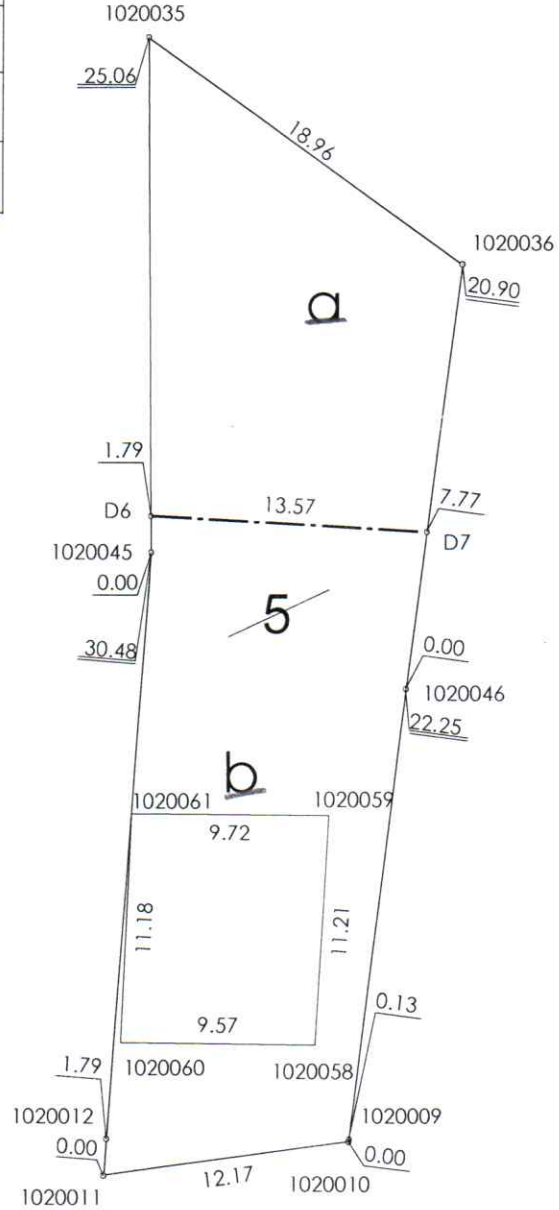
	HA	m <sup>2</sup>	Dm <sup>2</sup>
YÜZÖLÇÜMÜ (TAPU)	-	0660	05
UYGULMAYA GİRMEYEN (A)		0267	50
UYGULAMAYA GİREN (B)		0392	55

NoktaNo	Y	X
1020009	444276.21	4595196.75
1020010	444276.20	4595196.62
1020011	444264.14	4595194.97
1020012	444264.27	4595196.76
1020035	444266.26	4595250.42
1020036	444281.70	4595239.42
1020045	444266.45	4595225.37
1020046	444278.97	4595218.70
1020058	444274.57	4595201.34
1020059	444275.23	4595212.54
1020060	444264.99	4595201.46
1020061	444265.51	4595212.52
D6	444266.44	4595227.15
D7	444279.99	4595226.40

## ALAN HESABI

NoktaNo	Y	X	NoktaNo	Y	X
1020009	444276.21	4595196.75	1020010	444276.20	4595196.62
1020011	444264.14	4595194.97	1020012	444264.27	4595196.76
1020035	444266.26	4595250.42	1020036	444281.70	4595239.42
1020045	444266.45	4595225.37	1020046	444278.97	4595218.70
D6	444266.44	4595227.15	D7	444279.99	4595226.40

Ada/Parsel	Noktalar	Hesap Alan	Düzeltilme	Deng. Alan
5	D7, 1020046, 1020009, 1020010, 1020011, 1020012, 1020045, D6, 1020035, 1020036	660.05	+0.00	660.05
a	D6, 1020035, 1020036, D7	267.50	+0.00	267.50
b(D.GİREN)	D6, D7, 1020046, 1020009, 1020010, 1020011, 1020012, 1020045	392.55	+0.00	392.55
	TOPLAM	660.05	+0.00	660.05
TAPU ALANI		660.05		
HESAPLANAN FARK		0.00		
TECVİZ		10.47		



DÜZENLEYEN	UYGUNDUR BELEDİYE/ÖZEL İDARE		KADASTRO MÜDÜRLÜĞÜ
	KONTROL EDEN	ONAYLAYAN	KONTROL EDEN
Adı Soyadı ERCAN USTAOGLU Mühür ve Kadastro Mühendisi Kocaeli Köprüsü 5. Blok Kat: 5 Etiler Mahallesi, Beşiktaş İlçe, İstanbul			
Tarih			
İmza			

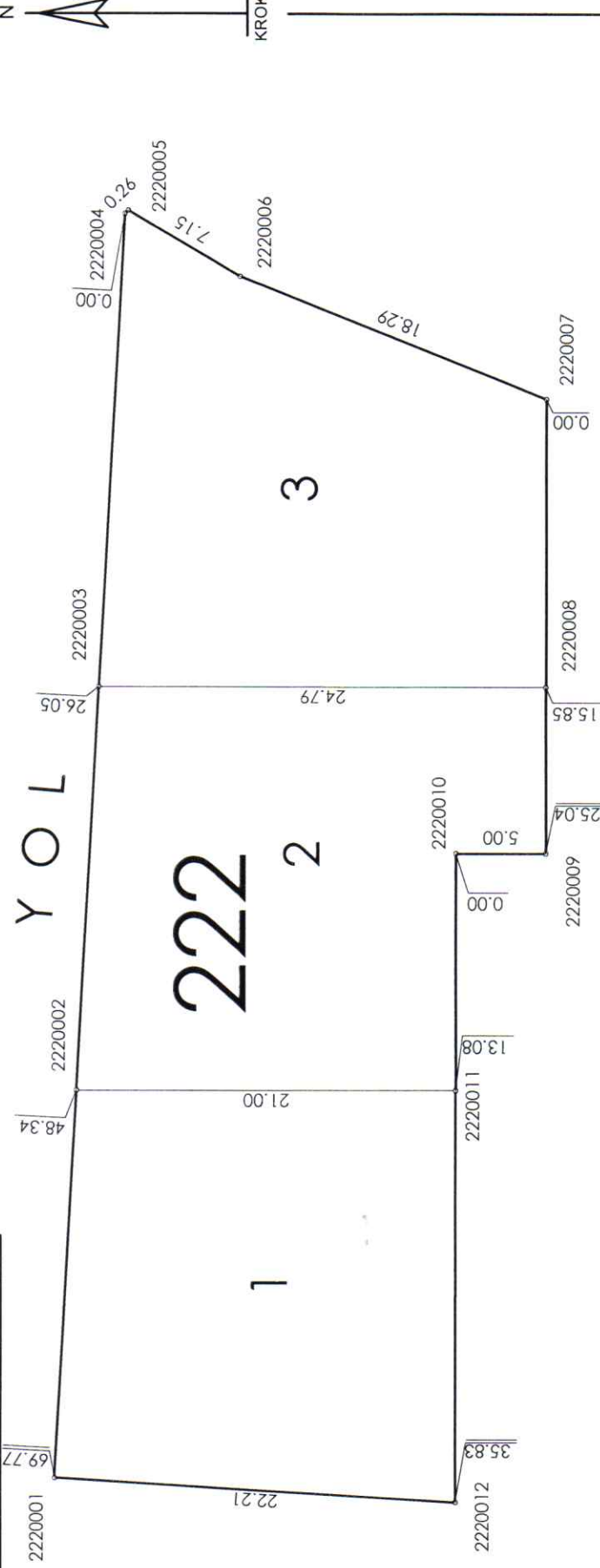






# RÖLEVE ÖLÇÜ KROKİSİ

İLİ	: BARTIN
İLÇESİ	: MERKEZ
MAH./KÖY	: KOZCAĞIZ - MERKEZ
ADA/PARSEL NO	: 222/1-2-3



NoktaNo	Y	X
2220001	444288.69	4595218.91
2220002	444310.09	4595217.72
2220003	444332.35	4595216.48
2220004	444358.36	4595215.04
2220005	444358.54	4595214.85
2220006	444354.90	4595208.69
2220007	444348.18	4595191.68
2220008	444332.33	4595191.69
2220009	444323.14	4595191.70
2220010	444323.15	4595196.70
2220011	444310.07	4595196.72
2220012	444287.32	4595196.74

ADY SOYADI	FRANÇOZTAĞLU
TARİH	02.03.2017
İMZA	
BELEDİYE/ÖZEL İDARE/PROJE İDARESİ	UYGUNDUR
KONTROL EDEN	ONAYLAYAN
DÜZENLEYEN	

Toplam Tahsis	=	4665.59		
Toplam İmar Ada Alanı	=	4665.59		
Toplam Ortak Katılım Alanı	=	0.00		
Toplam DüzenlemeyeGiren (Dopal)	=	6543.04		
Toplam DüzenlemeyeGiren (Dopalma)	=	0.00		
Toplam Kamulaştırılan Alan	=	0.00		
Toplam Bağışlanan Alan	=	0.00		
Toplam Kadastro Parsel Alanı	=	14420.69		
Toplam Pay	=	14420.69		
Ortak Katılım Oranı	=	0.0000000		
DüzenlemeOrtaklık Payı Oranı (DOPO)	=	0.2869385		
DOPÇOKOile birlikte)	=	0.2869385		
MaksimumDopOranı	=	0.45		
DüzenlemeOrtaklık Payı Hesabı				
KamuyaAyrılan Alan	=	6543.04 -	4665.59 =	1877.45
DüzenlemeOrtaklık Payı	=	1877.45 /	6543.04 =	0.2869385

**Ercan USTAĞLU**  
Harita ve Kadastro Mühendisi  
Seyhan Mah. Bulent Ecevit Blv  
Kahramanmaraş / GAZİANTEP  
Orta Sicil No: 2014 / Sip. No: 2017 4677



TOPLAMALAN : 14420.69 TOPLAMPAY : 14420.69 TOPLAMKAMULAŞTIRMA : 0.00 TOP. DÜZENLE. GİRMEYEN: 7877.65 TOP. DÜZENLEMENEGİREN: 6543.04				KADASTRO KAYITLARI ÖZETİ			SAYFA NO:1 İLİ : İLÇESİ : KÖY/MAH.:		
SNo	Pafta	Ada/Par	Alan	Hisse	Malik	Babası	Pay	Cinsi	
1	F28B02B1D	102/1	3698.81	5/18	MEHMETACIBAL	HASAN	1027.45	TARLA	
2	F28B02B1D	102/1	3698.81	5/18	MUSTAFA ACIBAL	HASAN	1027.45	TARLA	
3	F28B02B1D	102/1	3698.81	1/6	AYŞE ACIBAL	MEHMET	616.47	TARLA	
4	F28B02B1D	102/1	3698.81	5/18	MAKBULEACIBAL [Vrs.] DURMUŞ ERSİN ACIBAL [Vrs.] İBRAHİM HASANACIBAL [Vrs.] İBRAHİM MUSTAFA FADIL ACIBAL [Vrs.] İBRAHİM		1027.45	TARLA	
5	F28B02B1D	102/3	5241.81	1/6	AYŞE ACIBAL	MEHMET	873.64	TARLA	
6	F28B02B1D	102/3	5241.81	10/36	ŞABAN ESER X	İSMAİL	1456.06	TARLA	
7	F28B02B1D	102/3	5241.81	5/9	ŞABAN ESER X	İSMAİL	2912.12	TARLA	
8	F28B02B1D	102/4	801.40	1/6	AYŞE ACIBAL	MEHMET	133.57	BAHÇE	
9	F28B02B1D	102/4	801.40	5/6	HAVVAESER X	İBRAHİM	667.83	BAHÇE	
10	F28B02B1D	102/5	660.05	1/6	AYŞE ACIBAL	MEHMET	110.01	BAHÇE	
11	F28B02B1D	102/5	660.05	5/6	MUHAMMESAĞLAM	SALİH	550.04	BAHÇE	
12	F28B02B1D	102/6	4018.62	1/6	AYŞE ACIBAL	MEHMET	669.77	KARGİR EV VE BA	
13	F28B02B1D	102/6	4018.62	5/6	ŞEBNEM ESER X	NASIF	3348.85	KARGİR EV VE BA	

ERCANUSTAOĞLU- PAY HARİTA NI For Windows

**Ercan USTAĞLU**  
Harita ve Kadastro Mühendisi  
M. Mustafa Kemal Bulvarı Ecevit Bld.  
Nispetiye Mah. Kat: 11. Kat No: 110100000  
Beşiktaş/İSTANBUL  
Cada Sicil No: 2024/Şip No: 2017/4677

İli :		SAYFA NO:1
İlçesi :		
KÖYÜ/MAHALLESİ:		
T.C.	BELEDİYESİ	NOLUUYGULAMA SAHASI

Ö Z E T C E T V E L İ

K A D A S T R O									İ M A R	
Ada/Par	Alan	Kamu.	Y.Terk	D.Girmeyen	Dopal	Dopalma	Dop	İ.Tahsis	AdaNo	Alan
102/1	3698.81	-	-	3516.59	182.22	-	52.29	129.93	221	3188.11
102/3	5241.81	-	-	2034.43	3207.38	-	920.32	2287.07	222	1477.48
102/4	801.40	-	-	319.28	482.12	-	138.34	343.78		
102/5	660.05	-	-	267.50	392.55	-	112.64	279.91		
102/6	4018.62	-	-	1739.85	2278.77	-	653.87	1624.90		

K A D A S T R O T O P L A M L A R I									İ M A R	
Toplam Pay	Toplam Alan	Top Kamu	Toplam Y.Terk	Toplam D.Girmeyen	Toplam Dopal	Top. Düz. Giren Dopalma	Top Dop	Toplam Tahsis	Toplam Alan	
14420.69	14420.69	0.00	-	7877.65	6543.04	-	1877.45	4665.59	4665.59	

Düzenleme Ortaklık Payı Hesabı  
Kamuya Ayrılan Alan = 6543.04 - 4665.59 = 1877.45  
Düzenleme Ortaklık Payı = 1877.45 / 6543.04 = 0.2869385  
ERCANUSTAOĞLU- PAY HARİTA NI For Windows

**Ercan USTAOĞLU**  
Harita ve Kadastro Mühendisi  
Kemerköprü Mah. Ercan Ecevit Bld  
Bartın / 78100 BARTIN  
Orta Sicil No: 2022 Dip No: 2017 4677

TOPLAMLANAN		M A L S A H İ P L E R İ V A R A Ş T I R M A										SAYFA NO:1						
TOPLAMFAY		Ö Z E T F O R M U										TOPLAMDALANI						
TOPLAMKAMULAŞTIRMA		( K A D A S T R O F A R S E L İ N E S İ R A U )										O.KATILIM ORANI						
TOP. DÜZENLE. GİRMEYEN:												D.O.PAYI ORANI						
TOP. DÜZENLEMİYEN:																		
TOPLAMLANAN		K A D A S T R O										M A R						
SNo	Syf	Ada/Par	Alan	Malik	BabaAdı	Hissesi	Pay	Giren	Girmeyen	Dop	Tahsis	Ada/Par	Alan	Hisse	Açıklama (Kod)	Açıklama (İmar)	Cinsi	PafNo
1	7	102/1	3698.81	MEHMEACIBAL	HASAN	5/18	1027.45	50.61	976.83	14.52	36.09	221/2	296.38	3609/29658		ARSA		
2	7	102/1	3698.81	MUSTAFAACIBAL	HASAN	5/18	1027.45	50.62	976.83	14.52	36.10	221/2	296.58	3610/29658		ARSA		
3	7	102/1	3698.81	AYŞE ACIBAL	MEHMET	1/6	616.47	30.37	586.10	8.72	21.65	221/2	296.58	2165/29658		ARSA		
4	7	102/1	3698.81	MAKBULEACIBAL [Vrs.] DURMUŞ ERSİN ACIBAL [Vrs.] İBRAHİM HASANACIBAL [Vrs.] İBRAHİM MUSTAFAFADIL ACIBAL [Vrs.] İBRAHİM		5/18	1027.45	50.62	976.83	14.51	36.09	221/2	296.58	3609/29658		ARSA		
5	9	102/3	5241.81	AYŞE ACIBAL	MEHMET	1/6	873.64	53.45	339.07	153.38	381.18	221/1 221/2	2120.42 296.58	35340/212042 2778/29658		ARSA ARSA		
6	9	102/3	5241.81	ŞABANESER	İSMAIL	10/36	1456.06	890.94	565.12	255.64	635.30	221/1 221/2	2120.42 296.58	58901/212042 4629/29658		ARSA ARSA		
7	9	102/3	5241.81	ŞABANESER	İSMAIL	5/9	2912.12	1781.88	1130.24	511.29	1270.59	221/1 221/2	2120.42 296.58	117801/212042 9258/29658		ARSA ARSA		
8	10	102/4	801.40	AYŞE ACIBAL	MEHMET	1/6	133.57	80.35	53.22	23.05	57.30	221/3	343.78	5730/34378		ARSA		
9	10	102/4	801.40	HAVVAŞER	İBRAHİM	5/6	667.83	401.77	266.06	115.29	286.48	221/3	343.78	28648/34378		ARSA		
10	11	102/5	660.05	AYŞE ACIBAL	MEHMET	1/6	110.01	65.42	44.59	18.77	46.65	221/4	427.33	4665/42733		ARSA		
11	11	102/5	660.05	MUHAMMERĞLAM	SALIH	5/6	550.04	327.13	222.91	93.87	233.26	221/4	427.33	23326/42733		ARSA		
12	12	102/6	4018.62	AYŞE ACIBAL	MEHMET	1/6	669.77	379.79	289.98	108.97	270.82	221/4 222/1 222/2 222/3	427.33 477.00 500.00 500.48	2457/42733 7950/47700 8333/50000 8342/50048		ARSA ARSA ARSA ARSA		
13	12	102/6	4018.62	ŞEBNEMESER	NAŞİF	5/6	3348.85	1898.98	1449.87	544.90	1354.08	221/4 222/1 222/2 222/3	427.33 477.00 500.00 500.48	12285/42733 39750/47700 41667/50000 41706/50048		ARSA ARSA ARSA ARSA		

ERCANUSTAOĞLU PAY HARİTA NI For Windows

**Ercan USTAOĞLU**  
Harita ve Kadastro Mühendisi  
Kamuyu Gözetim Kuruluşu (KGGK) BARLİN  
Çevre, Şehircilik ve İklim Değişikliği Bakanlığı  
Çevre, Şehircilik ve İklim Değişikliği Bakanlığı  
Çevre, Şehircilik ve İklim Değişikliği Bakanlığı

6035,85  
8384,86  
Pay

1569,47 Düz. cimen  
4973,57  
Zabıt  
Harita  
Şehircilik



TOPLAMALAN : 14420.69  
TOPLAMPAY : 14420.69  
TOPLANKAMULAŞTIRMA : 0.00  
TOP. DÜZENLE. GİRMEYEN: 7877.65  
TOP. DÜZENLEMİYEGİREN: 6543.04

TOPLAMDAALANI : 4665.59  
O.KATILIM ORANI : 0.0000000  
D.O.PAYI ORANI : 0.2869385

SNO	Syft.	Ada/Par	Alan	Malik	BabaAdi	Hissesi	Pay	Giren	Girmyn	Dop	Tahsis	Ada/Par	Alan	Hisse	Açıklama (Kad)	Açıklama (İmar)	Cinsi	PaftNo
5	9 102/3	5241.81	AYŞE ACIBAL	MEHMET	1/6	873.64	534.56	339.07	153.38	381.18	2120.42	221/1	2120.42	35340/212042		ARSA		
6	9 102/3	5241.81	ŞABANESER	İSMAIL	10/36	1456.06	890.94	565.12	255.64	635.30	635.30			58901/212042				
7	9 102/3	5241.81	ŞABANESER	İSMAIL	5/9	2912.12	1781.88	1130.24	511.29	1270.59	1270.59			117801/212042				
1	7 102/1	3698.81	MEHMETACIBAL	HASAN	5/18	1027.45	50.61	976.83	14.52	36.09	296.58	221/2	296.58	3609/29658		ARSA		
2	7 102/1	3698.81	MUSTAFAACIBAL	HASAN	5/18	1027.45	50.61	976.83	14.52	36.10				3610/29658				
3	7 102/1	3698.81	AYŞE ACIBAL	MEHMET	1/6	616.47	30.37	586.10	8.72	21.65				2165/29658				
4	7 102/1	3698.81	MAKBULEACIBAL [Vrs.]	MEHMET	5/18	1027.45	50.62	976.83	14.51	36.09				3609/29658				
			DURMUŞ															
			ERSİN ACIBAL [Vrs.]															
			İBRAHİM															
			HASANACIBAL [Vrs.]															
			İBRAHİM															
			MUSTAFAFADIL ACIBAL [Vrs.]															
			İBRAHİM															
5	9 102/3	5241.81	AYŞE ACIBAL	MEHMET	1/6	873.64	534.56	339.07	153.38	381.18	2120.42	221/1	2120.42	2778/29658		ARSA		
6	9 102/3	5241.81	ŞABANESER	İSMAIL	10/36	1456.06	890.94	565.12	255.64	635.30	635.30			4629/29658				
7	9 102/3	5241.81	ŞABANESER	İSMAIL	5/9	2912.12	1781.88	1130.24	511.29	1270.59	1270.59			9258/29658				
8	10 102/4	801.40	AYŞE ACIBAL	MEHMET	1/6	133.57	80.35	53.22	23.05	57.30	343.78	221/3	343.78	5730/34378		ARSA		
9	10 102/4	801.40	HAVVAŞER	İBRAHİM	5/6	667.83	401.77	266.06	115.29	286.48				28648/34378				
10	11 102/5	660.05	AYŞE ACIBAL	MEHMET	1/6	110.01	65.42	44.59	18.77	46.65	427.33	221/4	427.33	4665/42733		ARSA		
11	11 102/5	660.05	MUHAMMERAĞLAM	SALİH	5/6	550.04	327.13	222.91	93.87	233.26				23326/42733				
12	12 102/6	4018.62	AYŞE ACIBAL	MEHMET	1/6	669.77	379.79	289.98	108.97	270.82				2457/42733				
13	12 102/6	4018.62	ŞEBNEMESER	NASİF	5/6	3348.85	1898.98	1449.87	544.90	1354.08				12285/42733				
12	12 102/6	4018.62	AYŞE ACIBAL	MEHMET	1/6	669.77	379.79	289.98	108.97	270.82	477.00	222/1	477.00	7950/47700		ARSA		
13	12 102/6	4018.62	ŞEBNEMESER	NASİF	5/6	3348.85	1898.98	1449.87	544.90	1354.08				39750/47700				
12	12 102/6	4018.62	AYŞE ACIBAL	MEHMET	1/6	669.77	379.79	289.98	108.97	270.82	500.00	222/2	500.00	8333/50000		ARSA		
13	12 102/6	4018.62	ŞEBNEMESER	NASİF	5/6	3348.85	1898.98	1449.87	544.90	1354.08				41667/50000				
12	12 102/6	4018.62	AYŞE ACIBAL	MEHMET	1/6	669.77	379.79	289.98	108.97	270.82	500.48	222/3	500.48	8342/50048		ARSA		
13	12 102/6	4018.62	ŞEBNEMESER	NASİF	5/6	3348.85	1898.98	1449.87	544.90	1354.08				41706/50048				

**Ercan Ustaoglu**  
Harita ve Kadastre Mühendisi  
Kadastrosu Muh. Bulvarı No: 17 Kat: 11/11  
Kadastrosu Muh. Bulvarı No: 17 Kat: 11/11  
0212 212 212 212  
0212 212 212 212



KADASTRO		İMAR ADANO											K.Par	T		
Ada	Par	221	222													
102	1	129.93														129.93
102	3	2287.07														2287.07
102	4	343.78														343.78
102	5	279.91														279.91
102	6	147.42	1477.48													1624.90
Toplam		3188.11	1477.48													4665.59

ERCANUSTAOĞLU PAY HARİTA NI For Windows

**Ercan USTAĞLU**  
Harita ve Kadastro Mühendisi  
Kemerköy Mah. Bulent Egevit Blv  
Kahramanmaraş  
Orta Sicil No: 14924/5 No: 2017 4677





İLİ :  
İLÇESİ :  
KÖY/MAH. :  
BELEDİYESİ :  
PAFTANO :

T E S C İ L  
S A Y F A S I

SAYFA NO:1

ADANO 221

Cilt	Syf	ParNo	Alan			Cinsi	Hisse	K A D A S T R O				Maliki	Babası
			He.	M2	Dm2			KAda	KPar	Cilt	Syf.		
		1	0	2120	42	ARSA	35340/212042 117801/212042 58901/212042	102 102 102	3 3 3	1 1 1	9 9 9	AYŞE ACIBAL ŞABANESER ŞABANESER	MEHMET İSMAİL İSMAİL
		2	0	0296	58	ARSA	3609/29658  2165/29658 3609/29658 3610/29658 2778/29658 9258/29658 4629/29658	102  102 102 102 102 102	1  1 1 3 3 3	1  1 1 1 1 1	7  7 7 9 9 9	MAKBULEACIBAL [Vrs.] DURMUŞ ERSİN ACIBAL [Vrs.] İBRAHİM HASANACIBAL [Vrs.] İBRAHİM MUSTAFAFADIL ACIBAL [Vrs.] İBRAHİM AYŞE ACIBAL MEHMEACIBAL MUSTAFAACIBAL AYŞE ACIBAL ŞABANESER ŞABANESER	MEHMET HASAN HASAN MEHMET İSMAİL İSMAİL
		3	0	0343	78	ARSA	5730/34378 28648/34378	102 102	4 4	1 1	10 10	AYŞE ACIBAL HAVVÆSER	MEHMET İBRAHİM
		4	0	0427	33	ARSA	4665/42733 23326/42733 2457/42733 12285/42733	102 102 102 102	5 5 6 6	1 1 1 1	11 11 12 12	AYŞE ACIBAL MUHAMMESAÇLAM AYŞE ACIBAL ŞEBNEMESER	MEHMET SALİH MEHMET NASİF

ERCANUSTAOĞLU PAY HARİTA NI For Windows

**Ercan USTAOĞLU**  
Harita ve Kadastro Mühendisi  
Konya İli, Konya İlçesi, Eskişehir Bulvarı  
Eskişehir, 46100  
Tic. Sic. No: 156821608680  
Oda Sicil No: 17000, Dip No: 2017-4677



İLİ :  
İLÇESİ :  
KÖY/MAH. :  
BELEDİYESİ :  
PAFTANO :

T E S C İ L  
S A Y F A S I

SAYFA NO:2

ADANO 222

Clt	Syf	ParNo	Alan			Cinsi	Hisse	K A D A S T R O					
			He.	M2	Dm2			KAda	KPar	Cilt	Syf.	Maliki	Babası
		1	0	0477	00	ARSA	7950/47700 39750/47700	102 102	6 6	1 1	12 12	AYŞE ACIBAL ŞEBNEMESER	MEHMET NAŞİF
		2	0	0500	00	ARSA	8333/50000 41667/50000	102 102	6 6	1 1	12 12	AYŞE ACIBAL ŞEBNEMESER	MEHMET NAŞİF
		3	0	0500	48	ARSA	8342/50048 41706/50048	102 102	6 6	1 1	12 12	AYŞE ACIBAL ŞEBNEMESER	MEHMET NAŞİF

ERCANUSTAOĞLU PAY HARİTA NI For Windows

**Ercan USTAĞLU**  
Harita ve Kadastro Mühendisi  
Kemerköprü Mah. Robert Ecevit Bly  
Kahramanmaraş 46100 BARTIN  
Bartın V. D. No: 17/08080  
M.B. No: 17/08080





NoktaNo	Y	X
1020005	444346.20	4595186.67
1020006	444348.18	4595191.68
1020007	444323.14	4595191.70
1020008	444323.15	4595196.70
1020009	444276.21	4595196.75
1020010	444276.20	4595196.62
1020011	444264.14	4595194.97
1020012	444264.27	4595196.76
1020013	444248.84	4595196.78
1020014	444149.54	4595196.87
1020015	444149.20	4595190.35
1020021	444045.63	4595195.76
1020022	444040.25	4595197.38
1020023	444037.76	4595225.17
1020024	444076.89	4595231.63
1020025	444094.78	4595231.87
1020026	444116.32	4595235.36
1020027	444135.10	4595231.27
1020028	444139.52	4595235.62
1020029	444153.01	4595242.38
1020030	444160.52	4595251.07
1020031	444180.51	4595249.37
1020032	444201.38	4595243.66
1020033	444233.30	4595246.63
1020034	444250.69	4595248.57
1020035	444266.26	4595250.42
1020036	444281.70	4595239.42
1020037	444299.96	4595238.26
1020038	444321.07	4595237.16
1020039	444339.03	4595246.74
1020040	444348.79	4595251.22
1020041	444378.78	4595249.77
1020043	444369.49	4595233.43
1020044	444252.83	4595229.96
1020045	444266.45	4595225.37
1020046	444278.97	4595218.70
1020047	444144.81	4595217.73
1020048	444354.90	4595208.69
1020049	444248.41	4595207.45
1020050	444149.91	4595203.93
1020051	444083.55	4595196.94
1020052	444067.44	4595196.74
1020053	444051.34	4595196.13
1020054	444348.93	4595208.52
1020055	444348.02	4595195.50
1020056	444338.84	4595209.17
1020057	444338.02	4595195.96
1020058	444274.57	4595201.34
1020059	444275.23	4595212.54
1020060	444264.99	4595201.46
1020061	444265.51	4595212.62
D1	444139.14	4595226.10
D2	444141.37	4595226.61
D3	444142.18	4595226.63
D4	444234.18	4595228.95
D5	444252.43	4595227.93
D6	444266.44	4595227.15
D7	444279.99	4595226.40
D8	444361.52	4595221.87

NoktaNo	Y	X
D9	444362.23	4595221.12
D10	444344.74	4595185.28
D11	444327.90	4595188.54
D12	444162.57	4595189.59
D13	444142.15	4595196.88

**Erçan USTA OĞLU**  
Harita ve Kadastro Mühendisi  
Kemerburgaz İlçe Belediyesi Çevreli Bld.  
Kahramanmaraş  
Etiler Mahallesi  
ODA Sicil No: 01/01/2017 4677





## ALANHESABI

NoktaNo	Y	X	NoktaNo	Y	X
1020012	444264.27	4595196.76	1020013	444248.84	4595196.78
1020034	444250.69	4595248.57	1020035	444266.26	4595250.42
1020044	444252.83	4595229.96	1020045	444266.45	4595225.37
1020049	444248.41	4595207.45	D5	444252.43	4595227.93
D6	444266.44	4595227.15			

## ALANHESABI

NoktaNo	Y	X	NoktaNo	Y	X
1020009	444276.21	4595196.75	1020010	444276.20	4595196.62
1020011	444264.14	4595194.97	1020012	444264.27	4595196.76
1020035	444266.26	4595250.42	1020036	444281.70	4595239.42
1020045	444266.45	4595225.37	1020046	444278.97	4595218.70
D6	444266.44	4595227.15	D7	444279.99	4595226.40

Ada/Parsel	Noktalar	HesapAlan	Düzeltilme	Deng.Alan
4	1020044,1020034,1020035, D6,1020045,1020012, 1020013,1020049,D5	801.40	+0.00	801.40
a	1020035,D6,D5,1020044, 1020034	319.29	+0.00	319.29
b(D.GİREN)	1020049,D5,D6,1020045, 1020012,1020013	482.11	-0.00	482.11
	TOPLAM	801.40	-0.00	801.40
TAPU ALANI		801.40		
HESAPLANAN		801.40		
FARK		-0.00		
TECVİZ		11.56		

Ada/Parsel	Noktalar	HesapAlan	Düzeltilme	Deng.Alan
5	D7,1020046,1020009, 1020010,1020011,1020012, 1020045,D6,1020035, 1020036	660.05	+0.00	660.05
a	D6,1020035,1020036,D7	267.50	+0.00	267.50
b(D.GİREN)	D6,D7,1020046,1020009, 1020010,1020011,1020012, 1020045	392.55	+0.00	392.55
	TOPLAM	660.05	+0.00	660.05
TAPU ALANI		660.05		
HESAPLANAN		660.05		
FARK		0.00		
TECVİZ		10.47		

**Ercan USTAĞLU**  
Harita ve Kadastro Mühendisi  
Kemerköy, 1. Cadde, Ecevit Biv  
Sakranlar, 59100, BİTLİS  
Barınak, 1. Kat, 59100, BİTLİS  
Daa Sicil No: 17012, Dip. No: 2017-4677



## ALAN HESABI

NoktaNo	Y	X
2210001	444146.83	4595219.75
2210002	444234.08	4595221.94
2210003	444236.94	4595221.78
2210004	444248.93	4595221.12
2210005	444263.23	4595220.32
2210006	444281.70	4595219.30
2210007	444280.30	4595196.74
2210008	444261.77	4595196.76
2210009	444247.42	4595196.78
2210010	444235.39	4595196.79
2210011	444149.18	4595196.87
2210012	444287.32	4595196.74

## ALAN HESABI

NoktaNo	Y	X	NoktaNo	Y	X
2210001	444146.83	4595219.75	2210002	444234.08	4595221.94
2210003	444236.94	4595221.78	2210004	444248.93	4595221.12
2210005	444263.23	4595220.32	2210006	444281.70	4595219.30
2210007	444280.30	4595196.74	2210008	444261.77	4595196.76
2210009	444247.42	4595196.78	2210010	444235.39	4595196.79
2210011	444149.18	4595196.87			

Ada/Parsel	Noktalar	HesapAlan	Düzeltilme	Deng.Alan
221	2210008,2210009,2210010,2210011,2210002,2210003,2210004,2210005,2210006,2210007	3188.11	+0.00	3188.11
221/1	2210001,2210002,2210003,2210010,2210011	2120.42	+0.00	2120.42
221/2	2210003,2210004,2210009,2210010	296.58	+0.00	296.58
221/3	2210005,2210008,2210009,2210004	343.78	+0.00	343.78
221/4	2210008,2210005,2210006,2210007	427.33	+0.00	427.33
	TOPLAM	3188.11	+0.00	3188.11
TAPU ALANI		3188.11		
HESAPLANAN		3188.11		
FARK		0.00		
TECVİZ		23.54		

Ada/Parsel	Noktalar	HesapAlan	Düzeltilme	Deng.Alan
222	2220005,2220006,2220007,2220008,2220009,2220010,2220011,2220012,2220001,2220002,2220003,2220004	1477.49	+0.00	1477.49
222/1	2220012,2220001,2220002,2220011	477.00	+0.00	477.00
222/2	2220002,2220003,2220008,2220009,2220010,2220011	500.00	+0.00	500.00
222/3	2220006,2220007,2220008,2220003,2220004,2220005	500.49	+0.00	500.49
	TOPLAM	1477.49	+0.00	1477.49
TAPU ALANI		1477.49		
HESAPLANAN		1477.49		
FARK		0.00		
TECVİZ		15.82		

**Ercan ÖZTAOĞLU**  
Harita ve Kadastro Mühendisi  
TMMOB Harita ve Kadastro Mühendisleri Odası  
Bağcıbaşı Mah. Bulvarı Ecevit Bld.  
Etiler/Beşiktaş/İstanbul - T.C. No: 2017 4677  
010 511 11 21 21



## ALAN HESABI

NoktaNo	Y	X
2210001	444146.83	4595219.75
2210002	444234.08	4595221.94
2210003	444236.94	4595221.78
2210004	444248.93	4595221.12
2210005	444263.23	4595220.32
2210007	444280.30	4595220.12
2210009	444261.77	4595220.32
2210010	444281.70	4595219.30
2210011	444280.30	4595196.74
2210012	444261.77	4595196.76
2210013	444247.42	4595196.78
2210014	444235.39	4595196.79
2210015	444149.18	4595196.87
2210016	444288.69	4595218.91
2210017	444310.09	4595217.72
2210018	444332.35	4595216.48
2210019	444358.36	4595215.04
2210020	444358.54	4595214.85
2210021	444354.90	4595208.69
2210022	444348.18	4595191.68
2210023	444332.33	4595191.69
2210024	444323.14	4595191.70
2210025	444323.15	4595196.70
2210026	444310.07	4595196.72
2210027	444287.32	4595196.74

## ALAN HESABI

NoktaNo	Y	X	NoktaNo	Y	X
2210001	444146.83	4595219.75	2210002	444234.08	4595221.94
2210003	444236.94	4595221.78	2210004	444248.93	4595221.12
2210005	444263.23	4595220.32	2210006	444281.70	4595219.30
2210007	444280.30	4595196.74	2210008	444261.77	4595196.76
2210009	444247.42	4595196.78	2210010	444235.39	4595196.79
2210011	444149.18	4595196.87			

NoktaNo	Y	X	NoktaNo	Y	X
2220001	444288.69	4595218.91	2220002	444310.09	4595217.72
2220003	444332.35	4595216.48	2220004	444358.36	4595215.04
2220005	444358.54	4595214.85	2220006	444354.90	4595208.69
2220007	444348.18	4595191.68	2220008	444332.33	4595191.69
2220009	444323.14	4595191.70	2220010	444323.15	4595196.70
2220011	444310.07	4595196.72	2220012	444287.32	4595196.74

Ada/Parsel	Noktalar	HesapAlan	Düzeltilme	Deng.Alan
221	2210008,2210009,2210010,2210011,2210002,2210003,2210004,2210005,2210006,2210007	3188.11	+0.00	3188.11
221/1	2210001,2210002,2210003,2210010,2210011	2120.42	+0.00	2120.42
221/2	2210003,2210004,2210009,2210010	296.58	+0.00	296.58
221/3	2210005,2210008,2210009,2210004	343.78	+0.00	343.78
221/4	2210008,2210005,2210006,2210007	427.33	+0.00	427.33
	TOPLAM	3188.11	+0.00	3188.11
TAPU ALANI		3188.11		
HESAPLANAN		3188.11		
FARK		0.00		
TECVİZ		23.54		

Ada/Parsel	Noktalar	HesapAlan	Düzeltilme	Deng.Alan
222	2220005,2220006,2220007,2220008,2220009,2220010,2220011,2220012,2220001,2220002,2220003,2220004	1477.49	+0.00	1477.49
222/1	2220012,2220001,2220002,2220011	477.00	+0.00	477.00
222/2	2220002,2220003,2220008,2220009,2220010,2220011	500.00	+0.00	500.00
222/3	2220006,2220007,2220008,2220003,2220004,2220005	500.49	+0.00	500.49
	TOPLAM	1477.49	+0.00	1477.49
TAPU ALANI		1477.49		
HESAPLANAN		1477.49		
FARK		0.00		
TECVİZ		15.82		

**Ercan ÜSTÜAĞLU**  
 Mühür ve Kadastro Mühendisi  
 Kadastro Mühendisleri Odası (KMO) Üyesi  
 Çıra Sırtı No: 17/11/2017/4672